

# Brackets & Tubes

Precision engineered and manufactured by G&H® in the U.S.A.



**ORTHODONTICS®**

Quality Manufacturing. Exceptional Service.

# The difference behind G&H® BRACKETS

By controlling the entire process from raw material sourcing to packaging & delivery, we assure quality manufacturing & exceptional service.



Ceramic (CIM) Feedstock  
Ceramic Brackets

1

**We start with the highest quality raw materials –**

G&H uses proprietary feedstock formulations with only the highest quality materials to ensure consistent quality.



Metal (MIM) Feedstock  
Metal Brackets

4



"Sintered"  
metal bracket



Metal brackets are tumbled after sintering to remove any burrs and to smooth contours.

5



The contoured mesh pad base is tack-welded by hand to metal bracket.



**"Seeing to every detail to ensure your success"**



Quality management system -  
ISO 13485:2003 & EN ISO 13485:2012

## Next, we precision manufacture –

2



The feedstock is compressed under high pressure in the injection molding machine. This creates what is known as a "green" bracket.

"Green"  
Metal Bracket



The "green" bracket is 20% larger than the finished bracket.

"Green"  
Ceramic Bracket



3



Ceramic brackets are complete after sintering as the base and bracket are formed as a single piece during the injection molding process. (Color-coding is applied after sintering).



6



Tack-welded metal brackets receive solder in preparation for final brazing.

7



Metal brackets travel through a brazing furnace to complete the soldering process.

8



Brackets go through a final finishing step giving them a smooth polished finish.

9



## Then we quality check –

All brackets are inspected for quality assurance throughout the manufacturing process and prior to packaging.

10

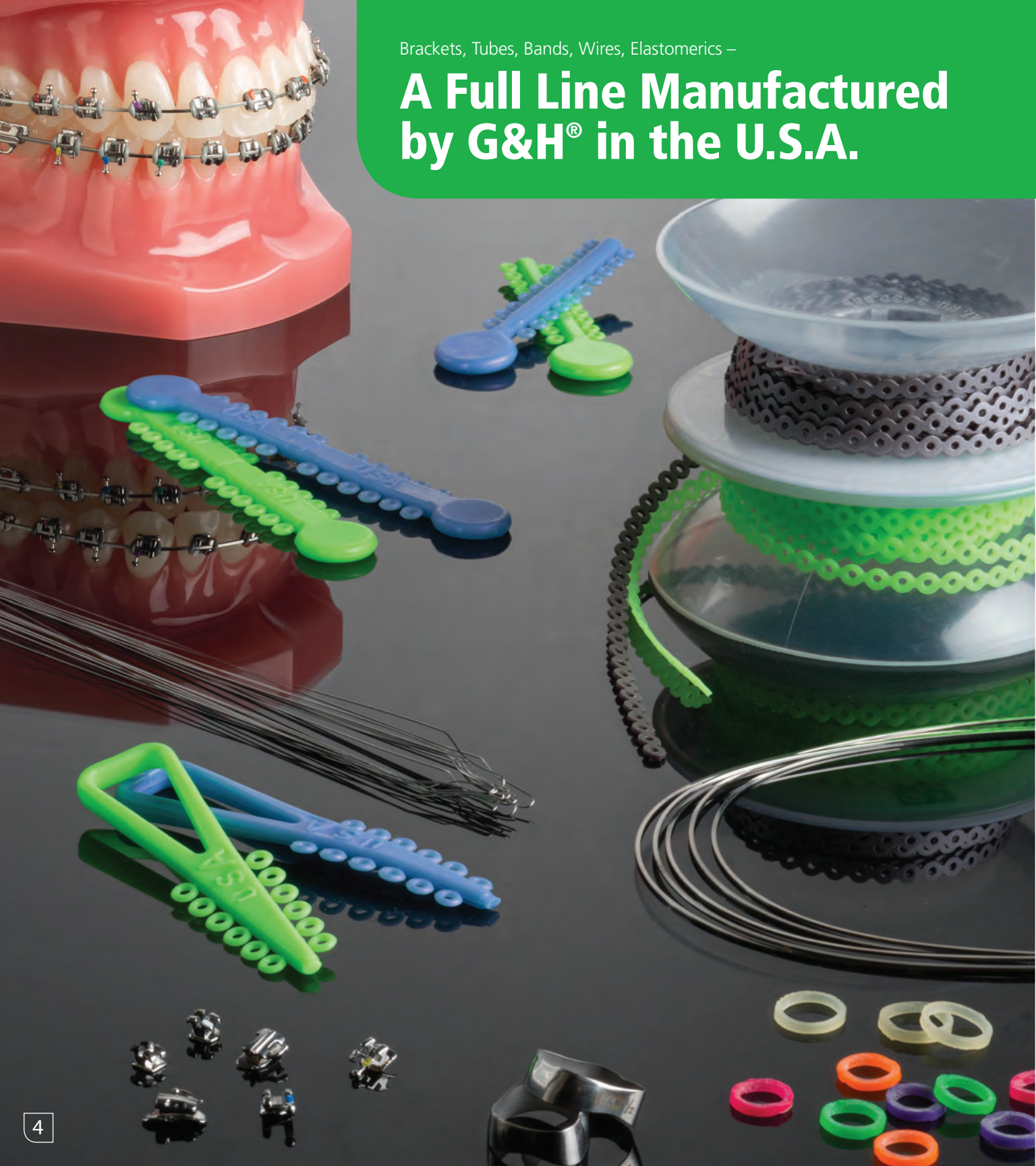


## To produce –

G&H® brackets that work seamlessly with our G&H® wires and elastomers.

Brackets, Tubes, Bands, Wires, Elastomers –

# A Full Line Manufactured by G&H® in the U.S.A.



# miniPrevail®

## BRACKET SYSTEM

### A POWERFUL, COMFORTABLE BRACKET SYSTEM

A mini twin bracket system with all the benefits of a full twin

miniPrevail® brackets are constructed of a specialized micro-grain surgical stainless steel metal injection molding (MIM) powder, for an inherently stronger, and more dimensionally accurate bracket.



See our video!

GHOrthodontics.com

#### METAL INJECTION MOLDED MIM\*\*

ensures exact tolerances and strength of design

#### FULL ROTATIONAL CONTROL

due to the mini twin design

#### UNIQUE, OFFSET SLOT

allows contact under tie wing only for reduced friction and full control

#### LOW PROFILE

- reduces occlusal interference
- enhances comfort

#### INCREASED TIE WING AREA

to facilitate ligation

#### COMPOUND CONTOUR BASE

for increased bond strength and precise bracket placement

#### 17-4 SURGICAL-GRADE STAINLESS STEEL

for greater strength

#### CENTER SCRIBE LINE

aligns with long axis for accurate placement

#### COLOR ENHANCED I.D.

for easy bracket selection

#### ROUNDED FACIAL CONTOURS

for patient comfort

#### CHAMFERED SLOT ENTRANCE

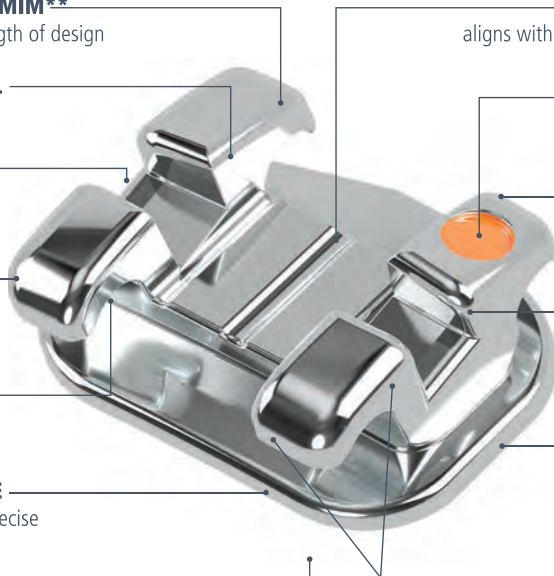
promotes easier and more rapid archwire placement

#### TORQUE IN BASE

for level slot lineup and improved finishing

#### RHOMBOIDAL SHAPE

Mesiodistal sides line up with the long axis and incisogingival sides line up with the occlusal plane



#### 80 GAUGE ANATOMICAL BONDING BASE

matches the anatomical curvature of the tooth for maximum contact and a strong, consistent bond

miniPrevail® is available in:

**Slot size:** .022 or .018

**Prescription:** Roth & MBT

**Hooks:** 3's only or 3's, 4's, 5's



Also available in Roth\* V-Slot



Actual patient wearing G&H miniPrevail® brackets.

\*G&H prescriptions are not implied to be an exact version of any other system, nor do we claim any endorsement by the doctor.

# G&H® Brackets **Clinical Results**

## miniPrevail® BRACKET SYSTEM **CASE STUDY**



“miniPrevail brackets are high-quality twin brackets. The base and scribe lines make for easy bracket placement. The tie wings allow for easy tie-ins with multiple ligatures if needed, but are strong and comfortable for the patient.”

—Howard Fine, D.M.D., M.M.Sc.

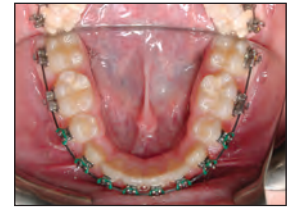
### Pre-Treatment

3/21/2014 – 11 yrs 4 mos



### Mid-Treatment

1/28/2015 – 12 yrs 2 mos



### Post-Treatment

8/31/2015 – 12 yrs 9 mos

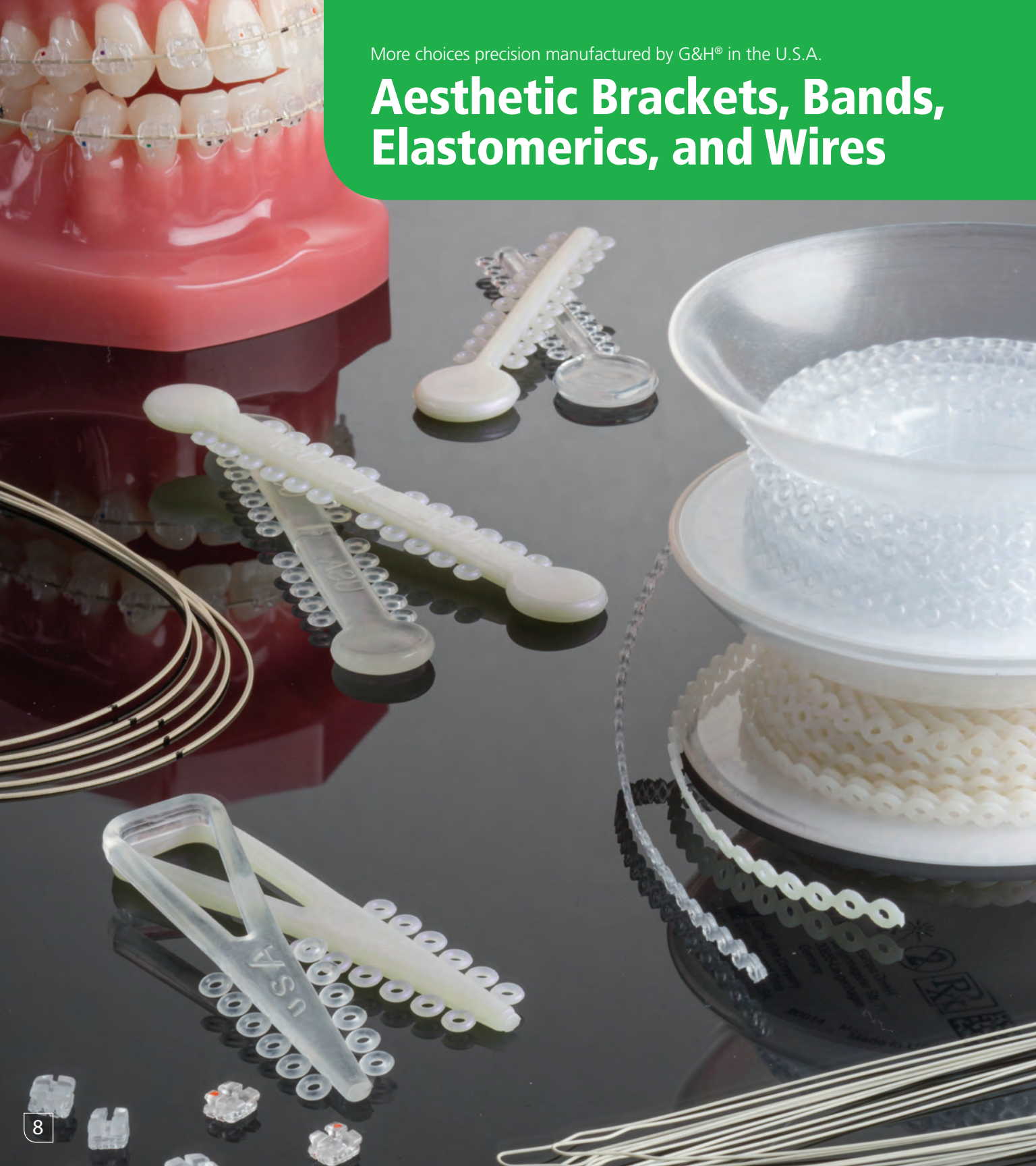




Actual patient wearing G&H miniPrevail® brackets.

More choices precision manufactured by G&H® in the U.S.A.

# Aesthetic Brackets, Bands, Elastomerics, and Wires



# VAPOR™

CERAMIC  
BRACKET SYSTEM

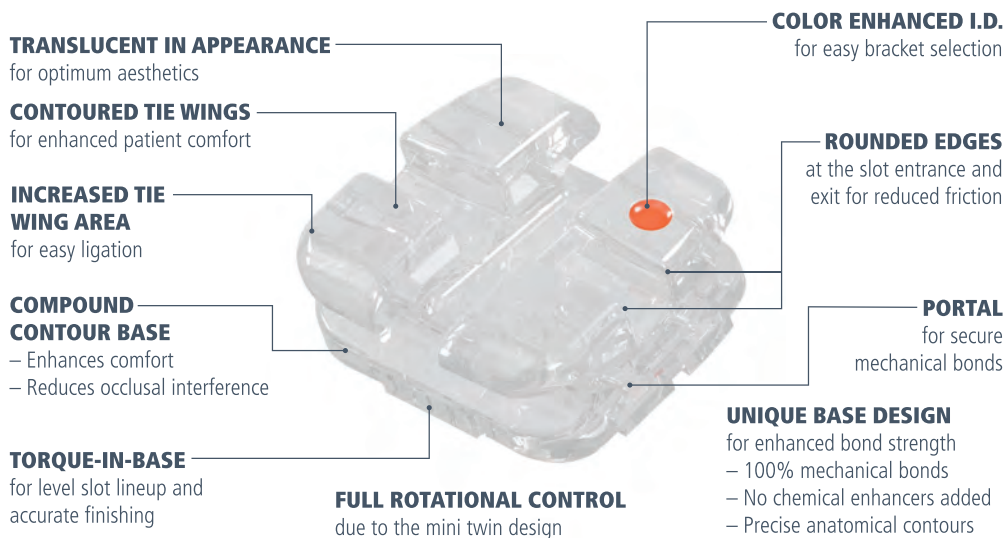
## A NEARLY INVISIBLE POLYCRYSTALLINE CERAMIC INJECTION MOLDED BRACKET

Vapor brackets are constructed of proprietary ceramic injection molding materials to ensure a stronger, and more dimensionally accurate bracket. Vapor's brilliant translucency presents a totally aesthetic appearance throughout treatment. The unique bonding base design ensures superior performance and easy, conventional debonding. The unique "portals" in the base allow adhesive to circulate through the base, creating a secure mechanical bond.



See our  
video!

GHOrthodontics.com



### Vapor's Revolutionary "Portal" Bonding Base



Vapor™ is available in:

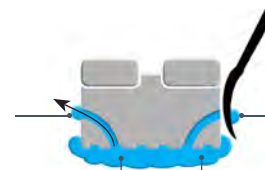
**Slot size:** .022 or .018

**Prescription:** Roth & MBT

**Hooks:** 3's or optional on 4's, 5's



**ADHESIVE EXITS**  
through portal openings  
on the mesiodistal sides  
of the bracket



**ADHESIVE POLYMERIZES IN THE PORTALS**  
and on the base during curing  
for unprecedented secure  
mechanical bonds

*"I love how you can hardly tell I'm wearing braces! I feel more confident to smile, plus they're comfortable."*

Actual patient wearing G&H Vapor™ brackets.



*"The Vapor system provides all the characteristics one would look for in a high-quality ceramic bracket: aesthetics, ease-of-bonding, smoothness and strength. Thanks to the unique portals in the base, mechanical bond strength is enhanced yet the bracket is easy to debond. It is made in the U.S.A. and is cost-effective. I can't think of anything else one could possibly ask for."*

– Howard Fine, D.M.D., M.M.Sc.

# Buccal Tubes

## VIPER™ LOW PROFILE BUCCAL TUBES

G&H has meticulously engineered a full complement of weldable and bondable, convertible and non-convertible tubes. Metal injection-molded surgical-grade stainless steel (MIM) for strength and dimensional accuracy.

### Single Non-Convertible

**4.2MM MESIAL/DISTAL DIMENSION**

for full rotational control

**LOW PROFILE HOOK**

allows easy engagement and patient comfort

**FULL-FUNNELED ENTRANCE**

helps guide wire into buccal tube

**TORQUE IN BASE**

or easy alignment with optimal functional occlusion and case finishing



**PERMANENT COLOR ENHANCED I.D.**

designed with specific geometric indents for each prescription, color-coded on the facial surface to help identify molar quadrants and assist with final positioning

**DISTAL NOTCH**

provides additional anchorage for ligation and tieback of auxiliaries

**OCCUSAL/GINGIVAL POSITIONING GUIDES**

allow for easy placement at the posterior region and assist with major adjustments prior to curing the adhesive

**COMPOUND CONTOUR 80 GAUGE MESH BASE**

anatomically conforms to the tooth and provides maximum bond strength

### Single Convertible

**INTEGRAL CAP**

secure yet removable



### Double Convertible



Viper™ is available in:

**Convertible & Non-Convertible**

**Bondable or Weldable Base Options**

**Slot size:** .022 or .018

**Prescription:** Roth & MBT

**Hooks:** 3's or optional on 4's, 5's



**ORTHODONTICS®**

Quality Manufacturing. Exceptional Service.



**BRACKETS**



**BANDS**



**TUBES**



**WIRES**



**SPRINGS**



**ELASTOMERICS**

Precision engineered and manufactured in the **U.S.A.**